

**AXALTA COATING SYSTEMS**



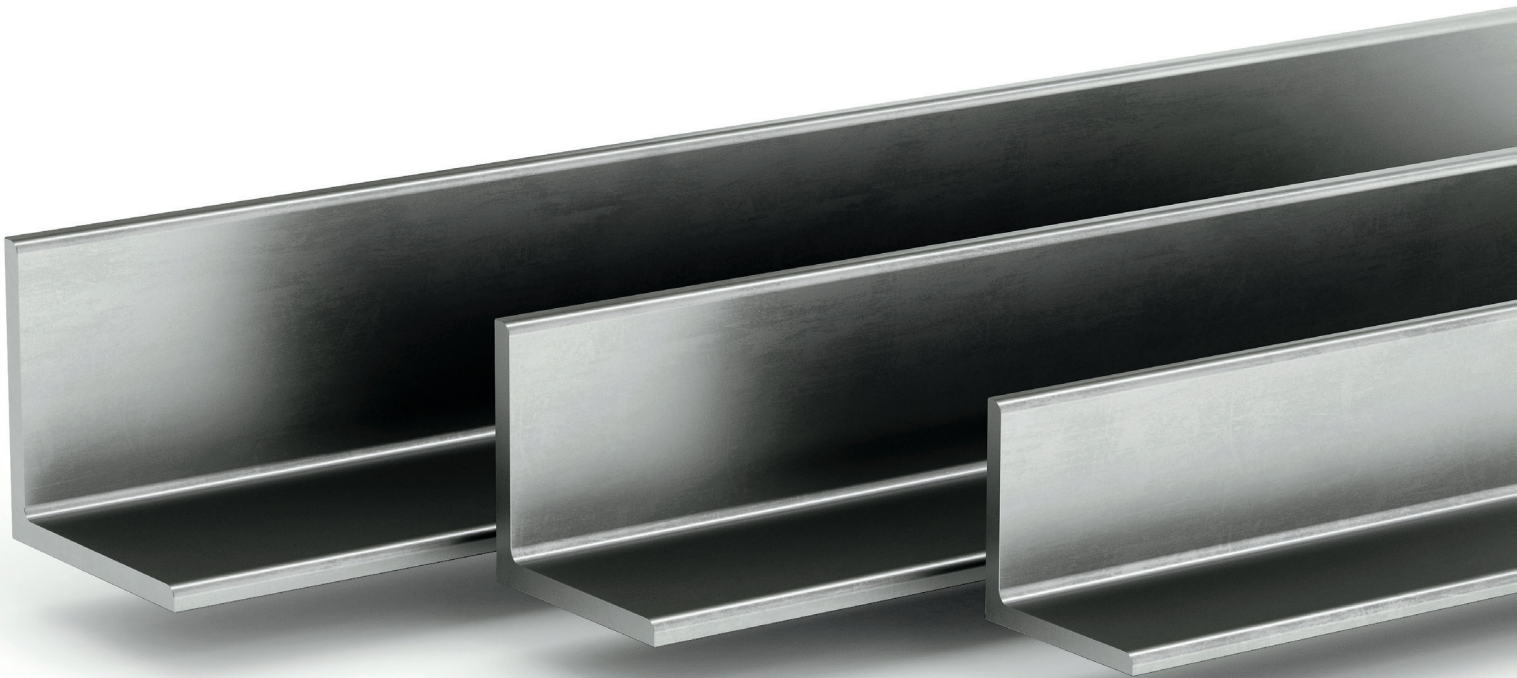
**General Industrial**

**Strenex**

Productive Coatings for Manufacturing



**BLEND SUPPLY**  
DISTRIBUTOR OF COATINGS, TOOLS & REFINISH SUPPLIES



The Strenex family of products include waterborne and solventborne single-component alkyd and acrylic products, as well as solventborne urethanes. The offering has a selection of fit-for-purpose fast-drying primers and direct-to-metal topcoats that allow users to reduce production times and costs. The 120- and 220-series primers offer steel fabricators and painters options that meet industry standards for performance at multiple VOC levels, including zero-VOC. The 602-series DTM urethane provides high film build properties with sag resistance up to 12 mils in a single coat.

Strenex balances the demands of corrosion-resistance, aesthetic-appeal and environmental-constraints to meet the most challenging production environments and application conditions.

## WATER-BASED COATINGS

### Strenex 216 Series

**Waterborne Alkyd DTM**

**VOC: 1.0 lbs/gal**

A single component water-based direct-to-metal enamel designed to provide corrosion protection and a semi-gloss finish when applied direct to properly prepared steel substrates.

Suggest for	Color
<ul style="list-style-type: none"> <li>• Conveyor Manufacturers</li> <li>• Waste Containers</li> </ul>	<ul style="list-style-type: none"> <li>• Black (216B3-100 05)</li> <li>• Additional Colors Available Upon Request</li> </ul>

### Strenex 217 Series

**Waterborne Acrylic DTM**

**VOC: 0.8 lbs/gal**

A single component, water-based direct-to-metal industrial enamel designed to provide corrosion protection when applied direct to clean or marginally prepared steel substrates.

Suggest for	Color
<ul style="list-style-type: none"> <li>• Waste Containers</li> <li>• Piping</li> <li>• Industrial Floor Fans</li> </ul>	<ul style="list-style-type: none"> <li>• Black (217B3-108 05)</li> <li>• Additional Colors Available Upon Request</li> </ul>

### Strenex 220 Series

**Waterborne Primer**

**VOC: .05 lbs/gal**

A fast-dry very low VOC water-based shop primer for structural steel, steel framing, joists, and general maintenance.

Suggest for	Color
<ul style="list-style-type: none"> <li>• Job Shops</li> <li>• Steel Fabricators</li> <li>• Specialty Manufacturer</li> <li>• Field Components</li> <li>• Metal Door Components</li> </ul>	<ul style="list-style-type: none"> <li>• Gray (220D3-103 05)</li> <li>• Additional Colors Available Upon Request</li> </ul>

## SOLVENT-BASED COATINGS

### Strenex 120 Series

**Solvent-based Primer**

**VOC: <3.5 lbs/gal**

A single component water-based direct-to-metal enamel designed to provide corrosion protection and a semi-gloss finish when applied direct to properly prepared steel substrates.

Suggest for	Color
<ul style="list-style-type: none"> <li>• Structural Steel Fabricators</li> <li>• Rack Manufacturers</li> <li>• Utility Trailer Builders</li> <li>• Metal Building Components</li> <li>• Conveyor Manufacturers</li> </ul>	<ul style="list-style-type: none"> <li>• Red (120R3-116 05)</li> <li>• Gray (120D3-116 05)</li> <li>• Additional Colors Available Upon Request</li> </ul>

### Strenex 140 Series

**Solvent-based Alkyd DTM**

**VOC: <3.5 lbs/gal**

A solvent-based, single component, air dry, DTM alkyd enamel designed to provide corrosion protection and a semi-gloss finish in one coat when applied direct to marginally prepared steel substrates.

Suggest for	Color
<ul style="list-style-type: none"> <li>• Utility Trailer Manufacturers</li> <li>• Steel Components</li> <li>• Waste Containers</li> <li>• Steel Tanks &amp; Piping</li> </ul>	<ul style="list-style-type: none"> <li>• Black (140B-354 05)</li> <li>• Additional Colors Available Upon Request</li> </ul>

### Strenex 121 Series

**Solvent-based Universal Primer**

**VOC: <3.5 lbs/gal**

A high solids, VOC Compliant, anti-corrosive primer designed to provide corrosion protection to steel substrates. This product is designed for the needs of OEM production schedule requirements for quick dry times and fast handling properties.

Suggest for	Color
<ul style="list-style-type: none"> <li>• Structural Steel Fabricators</li> <li>• Ag &amp; Construction Equipment</li> <li>• Light Duty Storage Tank</li> </ul>	<ul style="list-style-type: none"> <li>• Black (121B3-106 05)</li> <li>• Gray (121D3-106 05)</li> <li>• Red (121R3-106 05)</li> <li>• White (121W3-106 05)</li> </ul>

### Strenex 602 Series

**Solvent-borne 2K Polyurethane DTM**

**VOC: <2.8 lbs/gal**

A two-component DTM, semi-gloss polyurethane coating designed to provide corrosion protection and a tough finish coat direct to properly prepared steel substrates. Offers fantastic sag resistance over smooth or blasted profiles.

Suggest for	Color
<ul style="list-style-type: none"> <li>• Structural Steel Fabricators</li> <li>• Rack Manufacturers</li> <li>• Utility Trailer Builders</li> <li>• Metal Building Components</li> <li>• Conveyor Manufacturers</li> </ul>	<ul style="list-style-type: none"> <li>• Black (602B3-116 05)</li> <li>• Activator (652V-100 01)</li> <li>• Additional Colors Available Upon Request</li> </ul>